

## Real Time Temperature & Location Monitoring

For Truck/Trailer and Warehouse  
Monitoring Applications



Actual size: 5.5" x 3.5" x .75"

## Streamer4G

**Streamer4G** is a turnkey FSMA-compliant system which constantly monitors temperature controlled warehouses or truck/trailer temperature, humidity, door status, and location. All data is "streamed" to Cargo Data's online archive where it can be immediately reviewed and analyzed. This set-it-and-forget-it system specifically designed for company-owned delivery fleets which carry product subject to FSMA temperature monitoring requirements.

### Key Features:

- Latest generation 4G-LTE connectivity provides largest coverage area and most reliable data transmission
- Designed to monitor single and DUAL zone trucks/trailers and warehouses
- Door open/close events captured by built-in light sensor
- Simple truck/trailer installation. Mounting system and cable included

## Streamer4G



Optional external sensor used to monitor remote coolers or bulkheaded zones.

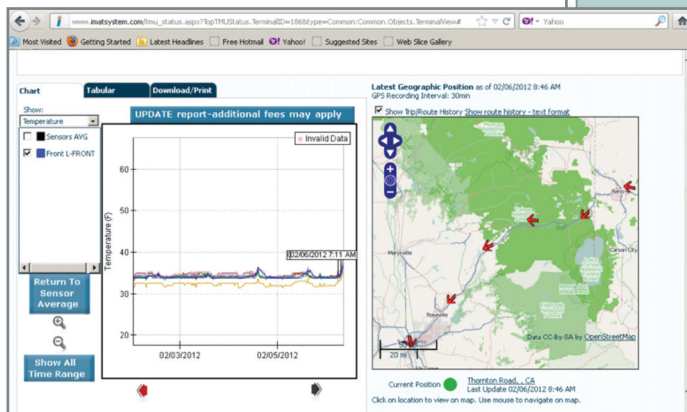
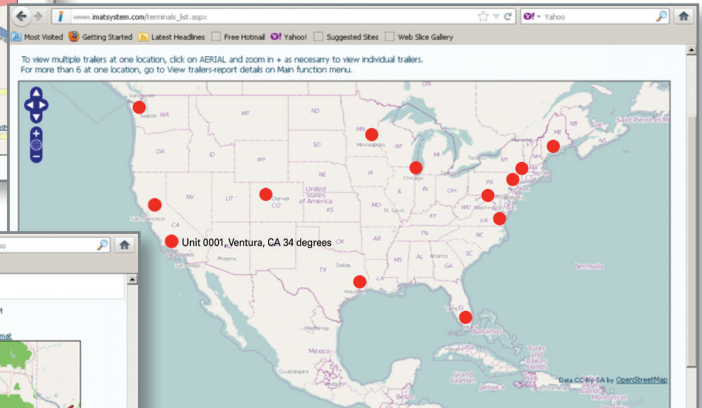
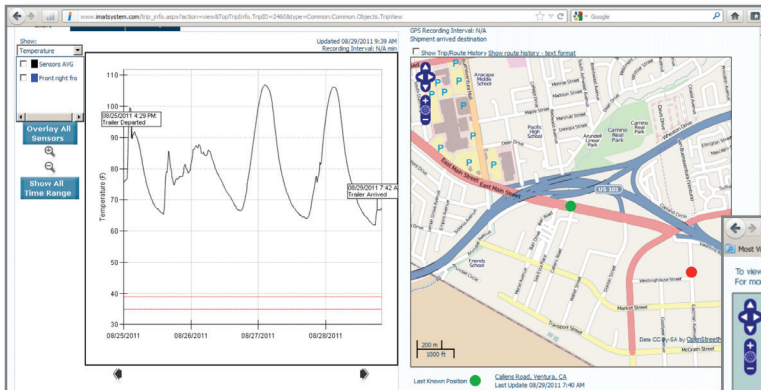
### Additional Features:

- Can be used as a portable monitoring system (5 day usage on fully charged internal battery)
- Can be used as a permanent monitoring system with use of power cord (provided)
- Can be configured to issue email or text alerts for out-of-range conditions are detected
- Two Mode Operation: Can be used as a standalone instrument for up to 5 days using internal rechargeable battery power. Preferred: Can also be hard wired into a truck/trailer 12 VDC power source for uninterrupted dedicated-unit operation
- Robust construction ensures years of reliable service
- 120 vac charger/adaptor provided for warehouse applications
- Current and historical temperature and location data viewable online, in real time.
- Relative humidity monitoring
- Logs door open/close events using onboard light sensor
- Robust construction for years of reliable service

### Streamer4G System Specifications:

- 4G-LTE connectivity provides best possible coverage area and transmission reliability
- Internal sensors for humidity and light. Ports for external temperature sensors or probes – configurable for two zone operation.
- Accuracy Range: 0 C to 21 C (32 F to 70 F) +/- .5 C (+/-1.0 F)
- Light sensitivity 3-30 lux
- Relative humidity accuracy +/- 7%
- Low battery alert LED
- Blinking green LED to confirm operation

## Actual Streamer System Shots:



Check out these other Cargo Data products:



Lightning NFC



Lightning NFC Real Time



Quality USB

www.cargodatacorp.com | 800-338-8134 | 805-650-5922