

# Select and Select RF

Receiver's Favorite



Actual size: 4" x 2.5" x .75"

## Full Featured Recorders

Cargo Data's **Select** and **Select RF** (radio frequency) digital temperature recorders offer industry-leading features that bring superior operational efficiency to all temperature controlled Shipping and Receiving operations.

**Select** series recorders are ideal for use in the transportation of products for the perishable foods, floral, chemical, and pharmaceutical industries.

### Maximize Efficiency:

**Select** can bring new efficiency to Receiving and QA operations by docking with the optional **Express** handheld data retrieval device. **Select RF** can transmit temperature data to **Express** wirelessly. **Express** provides chart and tabular data viewing within 5 seconds.



### Features:

- Audible locating beeper (optional)
- LCD display
- User selectable ranges
- Standard and custom ranges available, LED alerts
- Available in 10, 20, 40, 60, and 80 day recording periods
- Download directly to PC via cable or into **Express**
- **Select** series recorders and all other Cargo Data products utilize standard interfaces – no proprietary readers, printers, or cords required
- **KoldLink App** compatible. **KoldLink App** provides chart viewing, management reports, email data sharing, and data archiving.
- The optional **UpLink** feature within **KoldLink App** provides cloud-based data access and storage on the secure Cargo Data server
- Full-featured digital temperature recorders with impressive capabilities



Check out these other  
Cargo Data products:



Boomerang Reusable



Quality Blue



Express

[www.cargodatacorp.com](http://www.cargodatacorp.com) | 800-338-8134 | 805-650-5922

# Select and Select RF

Receiver's Favorite

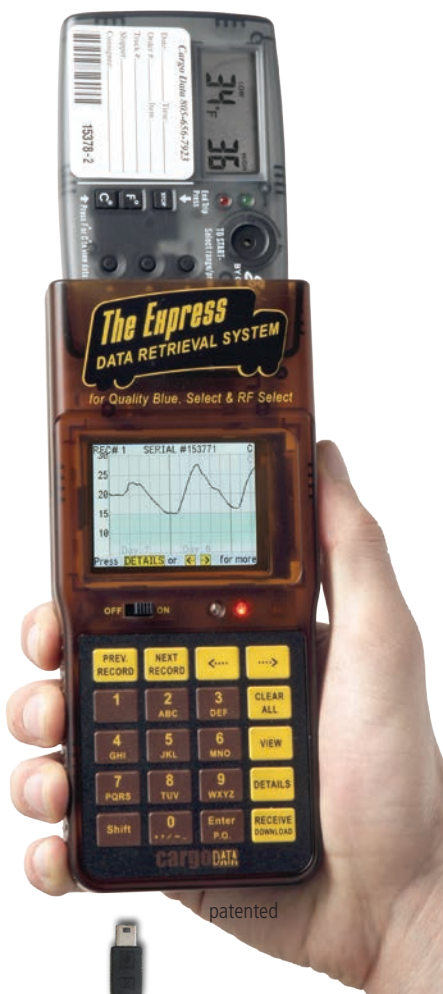


Radio Frequency  
Transmission



## EXPRESS Compatible

- Data downloads from recorder via dock in less than 5 seconds
- For maximum efficiency, **Select RF** can transmit data to **Express** wirelessly up to 300 feet in 5 seconds
- View detailed charts of trip data on large LCD
- LED out of range alert
- Add documentation such as PO number to record using **Express** keypad
- Stores data from up to 100 trips – batch download via USB cord to PC in 4 minutes
- Supported by **KoldLink App**
- Rechargeable battery
- See full **Express** specifications at [www.cargodatacorp.com](http://www.cargodatacorp.com)



patented



USB 2.0  
compliant

### Specifications :

- Rapid response temperature sensor
- Calibrated – N.I.S.T. traceable
- Accuracy: +/- .5° F, .3° C
- LCD displays time and temperature data
- Monitors temperatures from -20° to 120° F
- User selectable ranges
- Custom ranges available
- LED out of range alert (optional)
- Audible locating beeper (optional)
- Monitors up to 60 days per trip
- Size: 4" x 2.5" x .75"
- Weight: 3 oz
- Manufactured in Certified ISO9002 CE Facilities

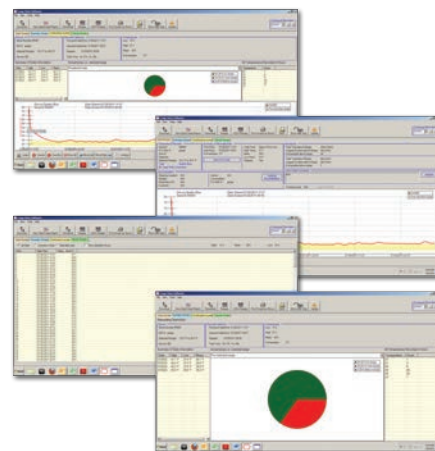
### Select RF Features:

#### All Select specifications plus:

- Signal frequency: 916 mHz RF signal to **Express**
- Interference: Signal does not interfere with passive RFID labels
- RF Range: Transmits to Express up to 300' line of sight

All product features, specifications and appearances may vary due to technical advances.

**FREE KoldLink App available  
at [www.cargodatacorp.com](http://www.cargodatacorp.com)**



### Rebate Programs Available

Cargo Data encourages and rewards recycling our temperature recorders.

**CARGO DATA**  
Cold Chain Monitoring Made Simple

Check out these other  
Cargo Data products:



FliProbe



Orange Wedge



Quality USB

[www.cargodatacorp.com](http://www.cargodatacorp.com) | 800-338-8134 | 805-650-5922